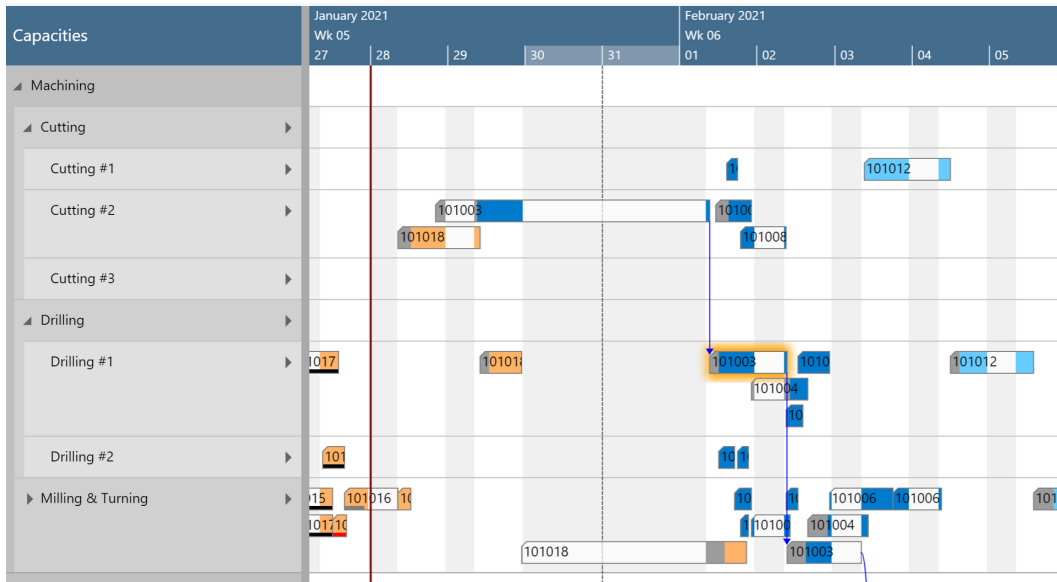


VISUAL PRODUCTION SCHEDULER (VPS)



BENEFITS OF THE VPS

- Easy to implement
- Intuitive interface
- Seamless integration with BC
- Immediate visualization of data
- Informed decision making
- Understand the production schedule faster

Is the lack of data transparency in your operations causing chaos on your shopfloor and lost revenues from missed delivery dates?

WHAT IS THE VPS?

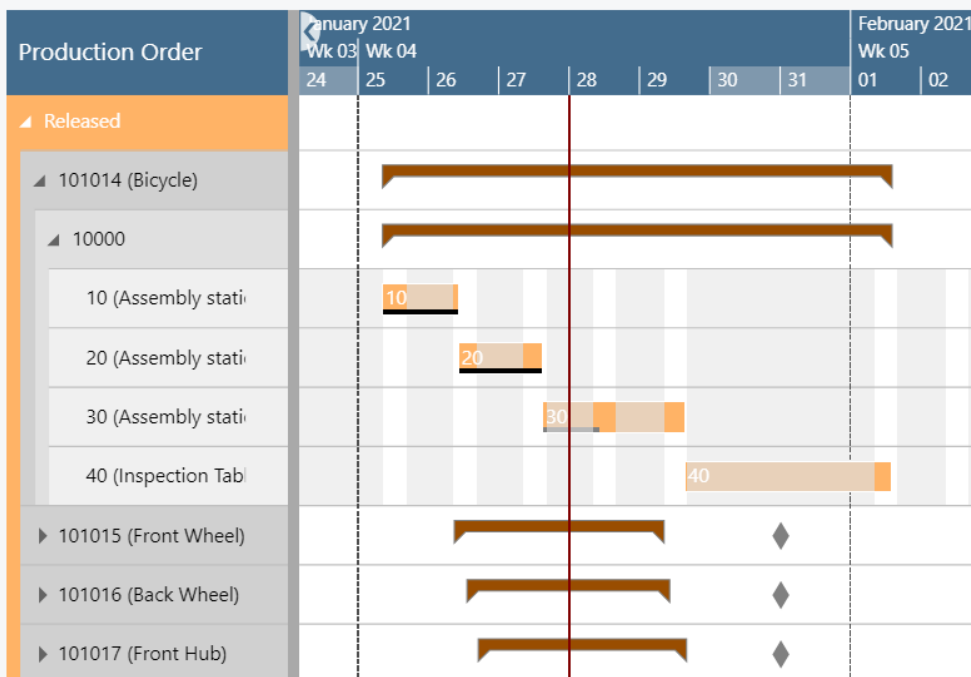
The Visual Production Scheduler (VPS) is the graphical front-end to your schedule for Microsoft Dynamics 365 Business Central manufacturing module.

The VPS brings you operational agility by turning all production related tables into an interactive production order and resource Gantt chart.

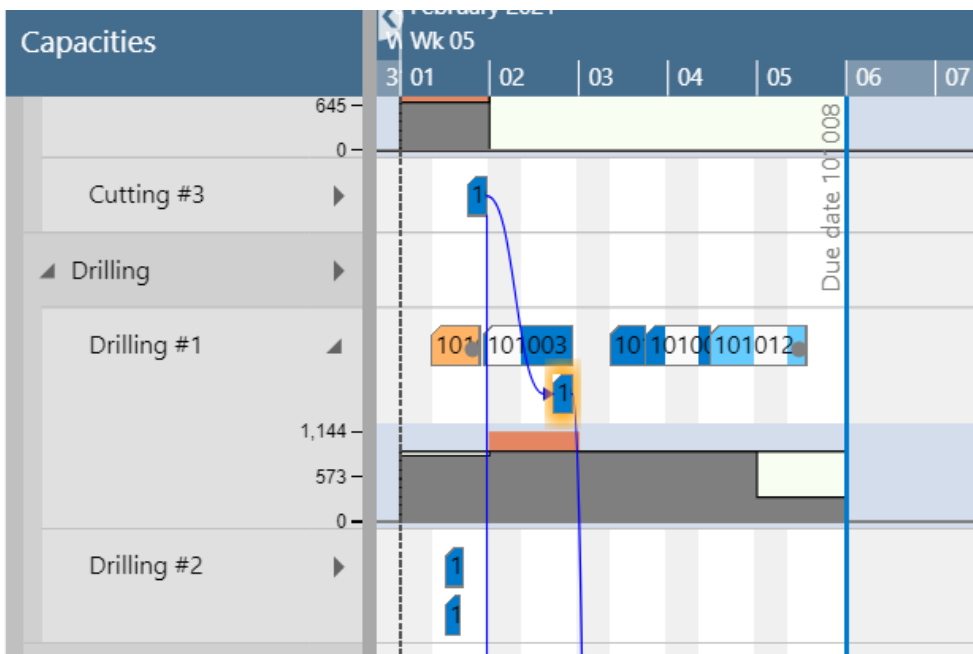
We help you stay on top of their operations and meet delivery times by visualizing your production schedule and allowing you to make quick corrective actions.

FUNCTIONS OF THE VPS

- Integration with production orders, operations, work and machine centers tables
- Filtering options
- Visual alerts
- Ability to make changes on the fly
- Automatic scheduling of successors and predecessors
- Visualization of setup and runtimes



Transparency through visualization - Production Order view



Transparency through visualization - Capacities view

PRODUCTION ORDER VIEW

- Color identification of production orders according to their status
- Rescheduling of operation with drag & drop
- Visual alerts for production orders running late and posting progress

CAPACITIES VIEW

- Visualization of the workload of your work/ machine centers
- Reassign operations to a different work or machine center
- Detect bottlenecks
- Visual alerts for overcapacity
- Understand all dependencies

Ready to take control with a **Visual Scheduler?**



Book a demo!

TECHNICAL DETAILS



Available on **Microsoft AppSource**

- Developed for Microsoft Dynamics 365 BC as of Version 14, 15, 16. For on prem and on AppSource
- Also available for Microsoft Dynamics NAV as of version 2009 R2 to 2018
- Real-time integration as a page in BC
- Multi-user support
- Designed for data from the Manufacturing Module (Production Orders, Production Order Lines, Production Order Routing Lines, Work Center Group, Work Center, Machine Center)
- Data-driven visualization